

Region Info

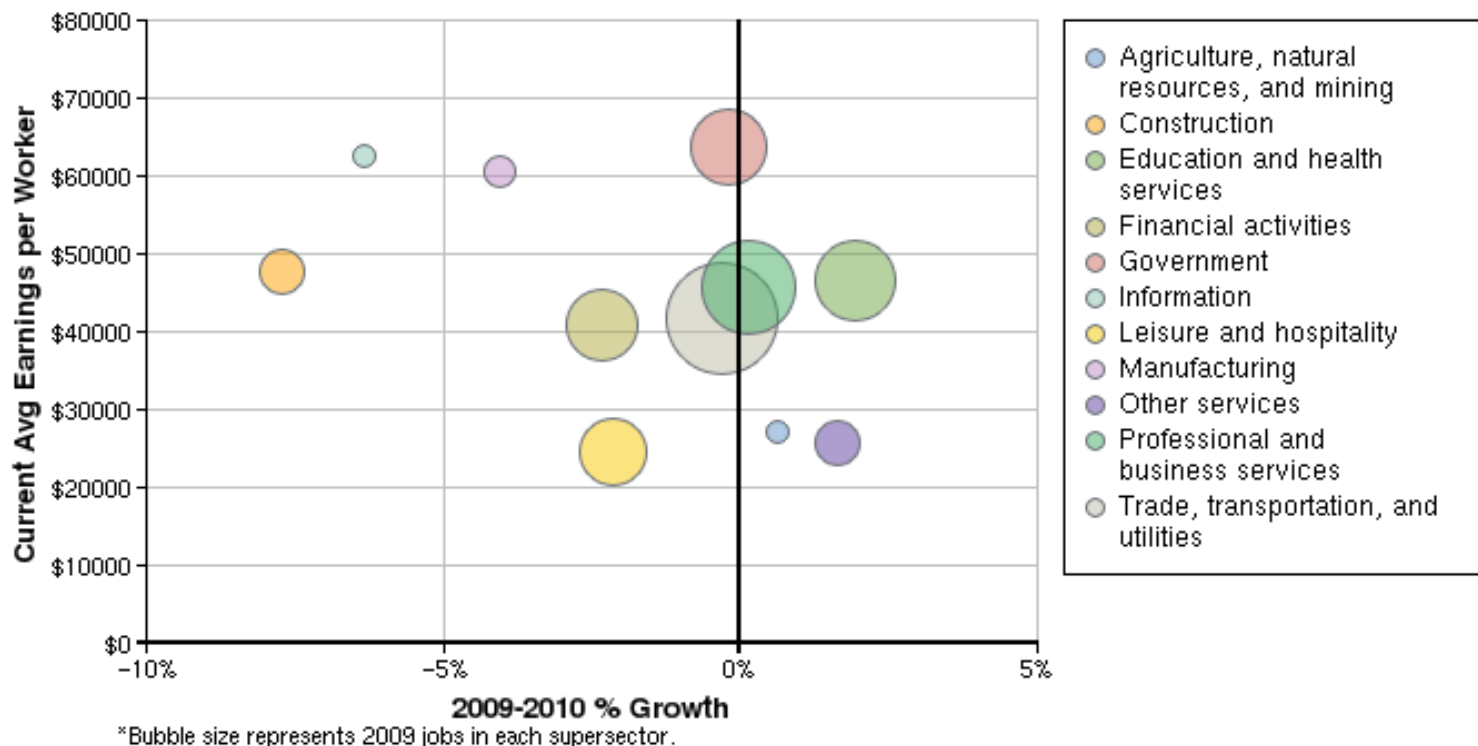
Region: Florida

Description: Florida stats

State Area: Florida

Industry Size and Growth

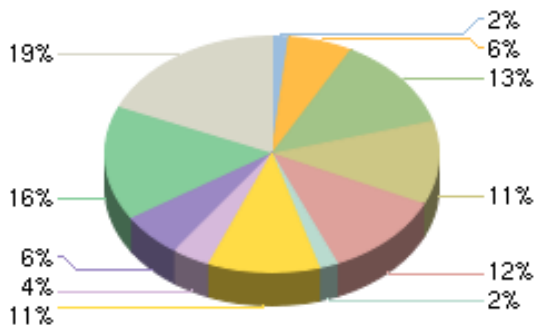
2009 - 2010 Size and Growth



Description	2009 Jobs	2010 Jobs	Growth	% Growth	Current EPW
Agriculture, natural resources, and mining	163,459	164,506	1,047	1%	\$27,132
Construction	609,241	562,119	-47,122	-8%	\$47,761
Education and health services	1,252,412	1,276,724	24,312	2%	\$46,636
Financial activities	1,122,566	1,096,243	-26,323	-2%	\$40,752
Government	1,151,168	1,148,840	-2,328	0%	\$63,628
Information	177,537	166,322	-11,215	-6%	\$62,538
Leisure and hospitality	1,050,110	1,027,609	-22,501	-2%	\$24,666
Manufacturing	364,641	349,854	-14,787	-4%	\$60,667
Other services	588,067	597,609	9,542	2%	\$25,761
Professional and business services	1,538,046	1,540,382	2,336	0%	\$45,698
Trade, transportation, and utilities	1,829,155	1,823,706	-5,449	0%	\$41,594
Total	9,846,403	9,753,914	-92,489	-1%	\$43,802

Source: EMSI Complete Employment - 2nd Quarter 2010

2009 Industrial Makeup



Description	2009 Regional Jobs	% Regional Jobs
Agriculture, natural resources, and mining	163,459	1.7%
Construction	609,241	6.2%
Education and health services	1,252,412	12.7%
Financial activities	1,122,566	11.4%
Government	1,151,168	11.7%
Information	177,537	1.8%
Leisure and hospitality	1,050,110	10.7%
Manufacturing	364,641	3.7%
Other services	588,067	6.0%
Professional and business services	1,538,046	15.6%
Trade, transportation, and utilities	1,829,155	18.6%

Source: EMSI Complete Employment - 2nd Quarter 2010

Data Sources and Calculations

Industry Data

In order to capture a complete picture of industry employment, EMSI basically combines covered employment data from Quarterly Census of Employment and Wages (QCEW) produced by the Department of Labor with total employment data in Regional Economic Information System (REIS) published by the Bureau of Economic Analysis (BEA), augmented with County Business Patterns (CBP) and Nonemployer Statistics (NES) published by the U.S. Census Bureau. Projections are based on the latest available EMSI industry data, 15-year past local trends in each industry, growth rates in statewide and (where available) sub-state area industry projections published by individual state agencies, and (in part) growth rates in national projections from the Bureau of Labor Statistics.

State Data Sources

This report uses state data from the following agencies: Florida Agency for Workforce Innovation.