

# Region Info

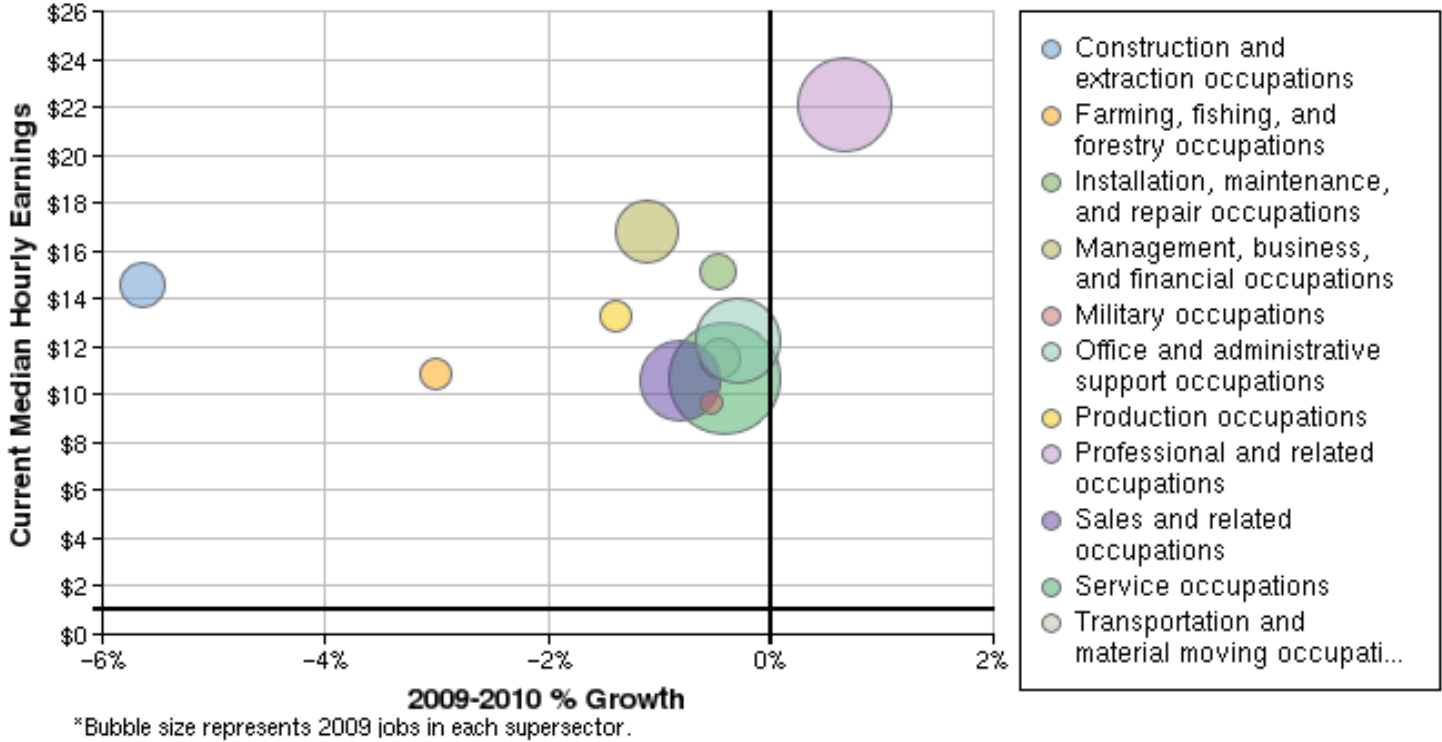
Region: St. Lucie County

Description: St. Lucie County

County Areas: St. Lucie, Florida (12111)

# Occupation Size and Growth

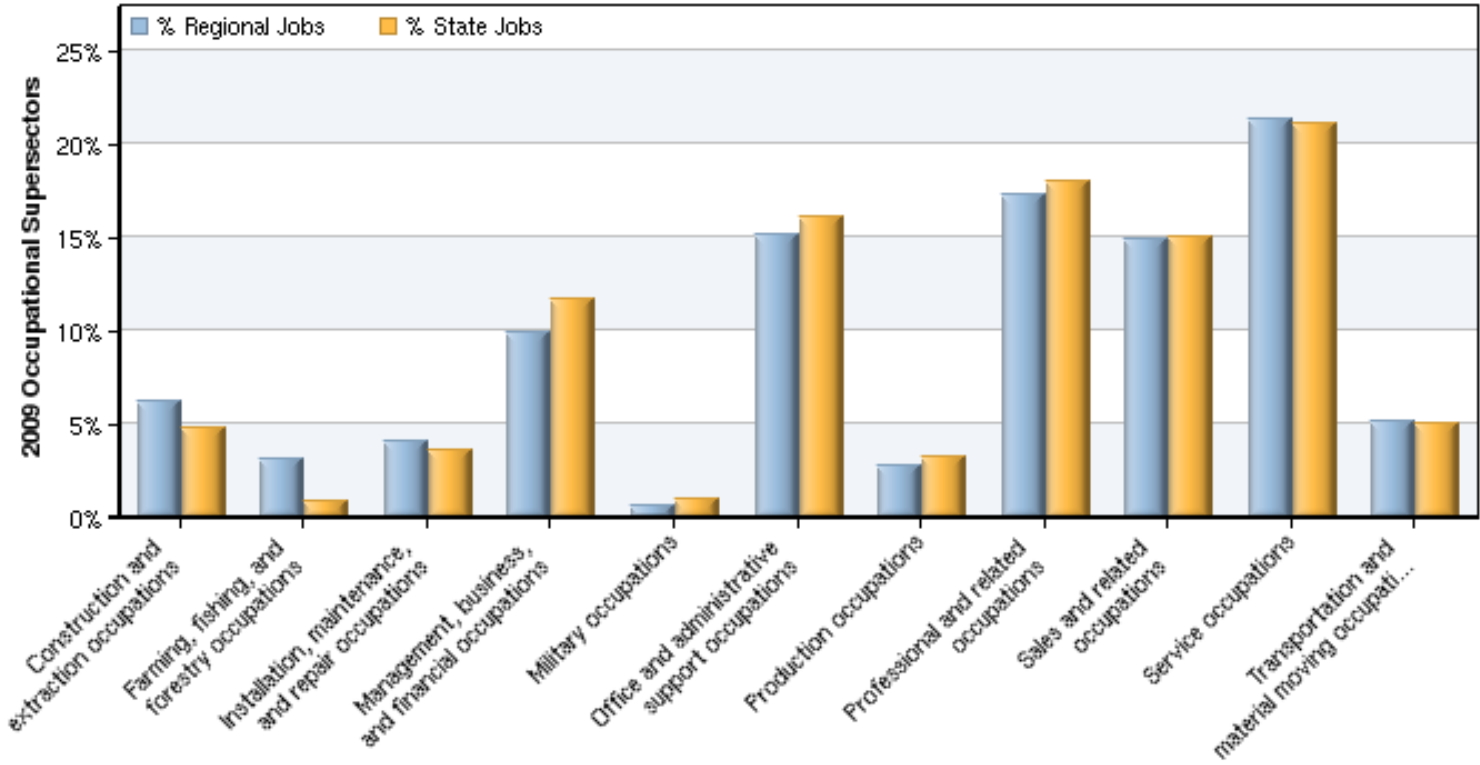
2009 - 2010 Size and Growth



Description	2009 Jobs	2010 Jobs	Growth	% Growth	Current Median Hourly Earnings
Construction and extraction occupations	5,855	5,525	-330	-6%	\$14.57
Farming, fishing, and forestry occupations	2,935	2,847	-88	-3%	\$10.91
Installation, maintenance, and repair occupations	3,835	3,817	-18	0%	\$15.17
Management, business, and financial occupations	9,464	9,359	-105	-1%	\$16.82
Military occupations	561	558	-3	-1%	\$9.62
Office and administrative support occupations	14,418	14,377	-41	0%	\$12.24
Production occupations	2,593	2,557	-36	-1%	\$13.31
Professional and related occupations	16,500	16,611	111	1%	\$22.12
Sales and related occupations	14,145	14,031	-114	-1%	\$10.56
Service occupations	20,287	20,203	-84	0%	\$10.64
Transportation and material moving occupations	4,831	4,809	-22	0%	\$11.47
<b>Total</b>	<b>95,424</b>	<b>94,692</b>	<b>-732</b>	<b>-1%</b>	<b>\$14.03</b>

Source: EMSI Complete Employment - 2nd Quarter 2010

2009 Occupational Makeup



Description	2009 Regional Jobs	% Regional Jobs	2009 State Jobs	% State Jobs
Construction and extraction occupations	5,855	6.1%	472,689	4.8%
Farming, fishing, and forestry occupations	2,935	3.1%	77,867	0.8%
Installation, maintenance, and repair occupations	3,835	4.0%	352,437	3.6%
Management, business, and financial occupations	9,464	9.9%	1,143,262	11.6%
Military occupations	561	0.6%	96,706	1.0%
Office and administrative support occupations	14,418	15.1%	1,583,660	16.1%
Production occupations	2,593	2.7%	317,416	3.2%
Professional and related occupations	16,500	17.3%	1,765,117	17.9%
Sales and related occupations	14,145	14.8%	1,472,724	15.0%
Service occupations	20,287	21.3%	2,072,086	21.0%
Transportation and material moving occupations	4,831	5.1%	492,439	5.0%

Source: EMSI Complete Employment - 2nd Quarter 2010

# Data Sources and Calculations

## Occupation Data

Organizing regional employment information by occupation provides a workforce-oriented view of the regional economy. EMSI's occupation data are based on EMSI's industry data and regional staffing patterns taken from the Occupational Employment Statistics program (U.S. Bureau of Labor Statistics). Wage information is partially derived from the American Community Survey. The occupation-to-program (SOC-to-CIP) crosswalk is based on one from the U.S. Department of Education, with customizations by EMSI.

## State Data Sources

This report uses state data from the following agencies: Florida Agency for Workforce Innovation.